

What is CDS?

*CDS is a lifeline for families.
CDS is a resource for the community.
CDS is a place to get help.*

While CDS's many individual programs serve a wide variety of community needs, they all fall under the umbrella of our mission statement:

“Empowering Youth & Building Strong Families for a Brighter Tomorrow”

Be it parents or guardians struggling with troubled youth or children at high risk for dangerous behaviors, CDS has programs that can help.

CDS has been serving the communities of North Central Florida for more than 50 years. Our services now cover an eleven county area:

Alachua	Dixie	Levy	Suwannee
Gilchrist	Bradford	Hamilton	Putnam
Union	Columbia	Lafayette	

CDS Family & Behavioral Health Services, Inc. is a private 501(c)(3) non-profit social services agency. At CDS, we constantly monitor our programs and results in order to better serve participants.

We welcome your feedback!
www.cdsfl.org

Quality Improvement

We want to continue to seek your feedback regarding the services received in order to improve the process. Find us on Facebook and like our page:

Contact Information

CDS Administration

Gainesville.....(352) 244-0628

Youth Shelters

Interface Central, Gainesville.....(352) 244-0618

Interface East, Palatka.....(386) 385-0405

Interface Northwest, Lake City.....(386) 487-0190

Safe Place.....(352) 244-0618

Counseling Offices

Gainesville.....(352) 244-0628 x 3822

Palatka.....(386) 385-0405

Lake City.....(386) 487-0190

Prevention.....(352) 244-0628

SNAP Gainesville.....(352) 244-0628x3804

SNAP Lake City.....(352) 318-9431

Online

www.cdsfl.org

[CDS \(@cdsfamilyandbehavioralhealth\)](#) • [Instagram](#)

[photos and videos](#)

[\(1\) CDS Family & Behavioral Health](#)



[Services, Inc. | Facebook](#)

[CDS Family and Behavioral Health Services - YouTube](#)

“A COPY OF THE OFFICIAL REGISTRATION AND FINANCIAL INFORMATION MAY BE OBTAINED FROM THE DIVISION OF CONSUMER SERVICES BY CALLING TOLL-FREE (800-435-7352) WITHIN THE STATE OR BY VISITING WWW.800HELPPFLA.COM.

REGISTRATION DOES NOT IMPLY ENDORSEMENT, APPROVAL, OR RECOMMENDATION BY THE STATE.”



Major support from: Florida Department of Juvenile Justice; Florida Network of Youth & Family Services; Florida Department of Children & Families; LSF Health Systems; Partnership for Strong Families; U.S. Department of Health & Human Services; United Way of North Central Florida; United Way of Suwannee Valley; and Individual Donations

CDS Family & Behavioral Health Services, Inc.



Find us on Facebook

“Empowering Youth & Building Strong Families for a Brighter Tomorrow”

3615 SW. 13th Street Suite 7
Gainesville, FL 32608

(352) 244 – 0628 x 3822
www.cdsfl.org

Our facilities are accessible to persons with disabilities.



Our Mission

“Empowering Youth & Building Strong Families for a Brighter Tomorrow”

CDS fulfills its mission by offering youth and families a safe place to talk and learn through offering a wide variety of programs to the community. Most programs fall into one of three areas:

***Youth Shelters *Counseling *Prevention**

Youth Shelters



Through its **Interface Youth Program**, CDS operates three shelters for youth who have runaway (or threaten to), are truant, ungovernable, or simply do not follow

directions. Sometimes it is necessary for parents and children to have a break from each other. This “time out” can allow everyone a chance to calm down and gain perspective. Interface is a **short-term youth shelter for children ages 10 to 17**. Interface provides shelter, a safe environment, food, clothing and counseling to each child. Services are available 24 hours a day. The Shelters are located in Gainesville, Lake City and Palatka and serve CDS’s entire, eleven-county area.

CDS also coordinates the **Safe Place** program in North Central Florida.

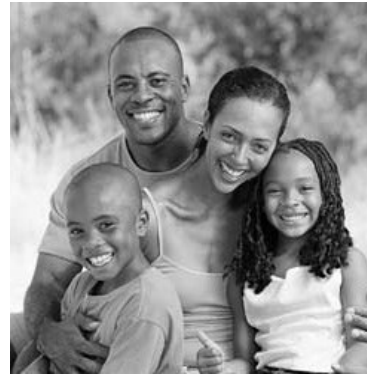
Safe Place is a national network of businesses and other community locations where youth can get immediate help for a variety of issues. Locations display the Safe Place logo, and staff are trained to contact our youth shelters, or other suitable services to provide immediate help for youth in crisis.



Our Commitment to You & Your Family

Maintaining a safe environment

Your safety is our first concern. We want to ensure that safety related issues are identified and responded to rapidly and appropriately.



Engaging Individuals

We want you to feel welcomed, from your first contact to your last, our staff will work with you to access and provide the services you need and are eligible for in a confidential, respectful, professional and friendly manner.

There is no “wrong door.” If CDS is not the right place for you to get the services you need, we are committed to helping you find the right place, whenever possible.



We will work with you in assessing your strengths and finding solutions to work on the problem(s) that you have identified.

We will check in frequently with you to ensure our mutual approach to working on your individual plan, goals and objectives remains relevant and productive.

We will emphasize appropriate discharge and transition planning throughout your involvement with us to ensure available resources are utilized to meet your expressed needs.

Remember

CDS coordinates the Safe Place program in North Central Florida.
Call (352) 244-0628 x 3865 to find out more!

Counseling

CDS offers short-term specialized Counseling services focused on youth in crisis and families struggling with youth with behavioral issues

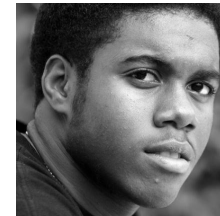


Prevention

CDS administers and supports a wide variety of prevention programs to educate the community and stop potential problems before they get out of control. These programs focus on substance abuse, underachieving, and high-risk populations.

Drug Free Community Coalition Partners:

CDS is active in the Alachua County Health Promotion and Wellness Coalition (HPW Coalition) and the Levy County Prevention Coalition. Through the use of community wide needs assessments, public education and resource development the Coalitions are dedicated to addressing issues such as underage drinking and changing social norms that put young people at risk for engaging in dangerous and unhealthy activities.



Evidence Based Prevention Programs:

CDS currently offers three programs scientifically proven to reduce risk factors and build protective factors in elementary and middle school youth.

Support Our Work!

CDS needs your help in order to continue providing valuable services to the community. Contributions are tax deductible and vital to our ongoing success. Both monetary and in-kind donations are very much appreciated! For more information or to find out how you can volunteer, please visit CDS’s website or contact the Resource Development Coordinator at: giving@cdsfl.org or at (352) 244-0628 x3865.